

# PK TIPPERS



**WELDOX**<sup>®</sup>  
HIGH STRENGTH STEEL

**HARDOX**<sup>®</sup>  
IN MY BODY

# PK - PALFINGER KRAN

PK - PALFINGER KRAN d.o.o. is manufacturing company for truck upgrades and general dealer in Croatia, Bosnia, Serbia, Montenegro, Macedonia, Kosovo and Albania for Palfinger product - the world's leading manufacturers of hydraulic cranes. The company have central production - service factory located in Kukuljanovo (Rijeka) Croatia and service center in Zagreb, Croatia, also the companies Palfinger Srbija d.o.o. in Belgrade and Palfinger BH d.o.o. in Sarajevo. Through 20 years work experience the company has developed production of tippers, trailers, containers, body boxes, platform for timber transport, tow tracks and additional equipment for cranes.



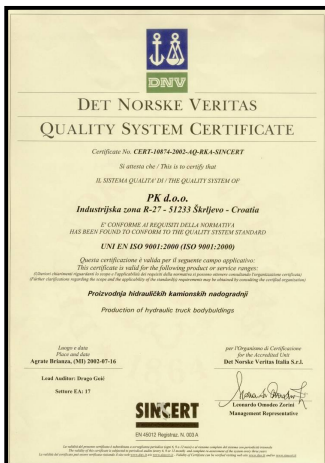
**PK-PRODUCTION AND SERVICE  
FACTORY KUKULJANOVO**



**PK-SERVICE CENTER  
ZAGREB**



**PALFINGER SRBIJA  
BELGRAD**



The company has been since 2002. certified according to ISO 9001, which ensures constant product quality and customer care.

Year 2009. the company has received the certificate "Hardox in my body," with which is authorized, in the production of truck upgrades,

PK d.o.o has received several significant economic awards including the *Zlatna kuna* for the most successful company in the region for the Year 2005.

## PK PRODUCT



## PK IS DEALER FOR



# PK TREE WAY TIPPERS

## TK 10 TK 35 TK 45 TK 65 TK 75 TK 95 TK 115

### TK 10 TK 35

**TK 10** — for vehicle 3,5 – 5,5 t GVW  
**TK 35** — for vehicle 6 - 6,5 t GVW

Steel tipper body:

- floor made of steel S355, thickness 3 mm
- fixed front board with cab protection
- boards made of steel S355, thickness 2 mm
- side boards opening . lower part only
- two way opening rear board . tipper and down side opening

Optional:

- AL - aluminium side boards, thickness 25 mm
- A LIB - rear board opening «a libro»
- NAD - over boards, height 400 mm - steel mesh, removable



TK 10

Strengthened boards "V" profiles

### TK 45 TK 65 TK 75

**TK 45**— for vehicle 7 – 9 t GVW  
**TK 65**— for vehicle 10 t GVW  
**TK 75**— for vehicle 12 t GVW

Steel tipper body:

- floor made of steel HARDOX HX 450, , thickness 4 mm
- fixed front board with cab protection (only without the crane)
- boards made of steel S355, thickness 2 mm, side, thickness 60 mm
- two way opening system for side boards
- one piece side boards
- rear board tipper opening (lover part only) with automatic mechanical opening / closing system
- rear colums removable (with screws)

Optional:

- 500 - 100 mm higher boards (high 500 mm) . (TK 45)
- 600 - 100 mm higher boards (high 600 mm) - (TK 75)
- AL - aluminium side boards, thickness 40 mm
- DSZ - pneumatic two way opening rear board . tipper and down side opening
- A LIB - rear board opening «a libro»



TK 65

Aluminium boards

### TK 95 TK 115

**TK 95**— for vehicle 14-16 t GVW  
**TK 115**—for vehicle 18-19 t GVW

Steel tipper body:

- floor made of steel HARDOX HX 450, thickness 4 mm
- fixed front board with cab protection (only without the crane)
- boards made of steel S355, thickness 2,5 mm, side thickness 60 mm
- two way opening system for side boards
- one piece side boards - up to length 4500 mm
- two pieces side boards - from length 4500 mm
- rear board tipper opening (lover part only) with automatic mechanical opening / closing system

Optional:

- VHX600 - strengthened side boards, high 600 mm - "V" profiles, steel Wieldox 700, thickness 3.2 mm (increasing tipper weight for 150 kg)
  - VHX800 - strengthened side boards, high 800 mm - "V" profiles, steel Wieldox 700, thickness 3.2 mm (increasing tipper weight for 180 kg)
  - VHX1000 - strengthened side boards, high 1000 mm - "V" profiles, steel Wieldox 700, thickness 3.2 mm (increasing tipper weight for 220 kg)
  - AL - aluminium side boards, thickness 40 mm
  - 400 M - over boards, height 400 mm - steel mesh, removable
  - DZS - pneumatic two way opening rear board . tipper and down side opening
  - A LIBRO
- rear board opening «a libro»



TK 75

Removable over boards, steel mesh



TK 95

Profiled boards

# PK TREE WAY TIPPERS

## TK 160 TK 200 TK 220

TK 160



### TK 160

**TK 160— for vehicle 26 t GVW**

Steel tipper body:

- floor made of steel HARDOX HX 450, , thickness 5 mm
- fixed front board with cab protection (only without the crane)
- boards made of steel S355 , thickness 3,0 mm, side thickness 60 mm, strength with jet rips+
- two way opening system for side boards
- two pieces side boards with central column
- rear board tipper opening (lover part only) with automatic mechanical opening / closing system
- central column removeable, front and rear fixed

Optional:

- VHX 850 - strengthened side boards, high 850 mm - "V" profiles, steel Weldox 700, Thickness 3.2 mm (increasing tipper weight for 100 kg)
- VHX1000 - strengthened side boards, high 1000 mm - "V" profiles, steel Weldox 700, thickness 3.2 mm (increasing tipper weight for 120 kg)
- P - pneumatic opening side boards from cab
- A LIB - rear board opening «a libro»
- D - central and one rear column removable, front and one rear column fixed (for containers transport)
- HIDR - hydraulic instalation for trailer
- AL - aluminium side boards, thickness 60 mm
- 1 - one pice side boards . closing only with crane or forklift

**Option Bordmatic**  
Hydraulic opening side boards



### TK 200 TK 220

**TK 200 — for vehicle 33 t GVW**

**TK 220 — for vehicle 41 t GVW**

Steel tipper body:

- floor made of steel HARDOX HX 450, , thickness 6 mm
- fixed front board with cab protection (only without the crane)
- side boards with "V" profiles, made of steel Weldox 700, thickness 4,0 mm
- two way opening system for side boards
- two pices side boards with central column
- rear board tipper opening (lover part only) with automatic mechanical opening / closing system
- central column removeable, front and rear fixed (TK 200)

Options:

- P - pneumatic opening side boards from cab
- A LIB - rear board opening «a libro»
- D - central and one rear column removable, front and one rear column fixed (for containers transport)
- HIDR - hydraulic instalation for trailer
- AL - aluminium side boards (by model TK220 it is not possible)
- 1 - one pierce side boards . closing only with crane or forklift (by model TK220 it is not possible)

TK 220



“V” boards with “jet rips”

## ADDITIONAL EQUIPMENT

**TOOL BOX**



**SIDE UNDER RIDE PROTECTION**



**MAD GUARD**



**LIGHT PROTECTION**



# PK REAR TIPPERS FOR MUNICIPAL ACTIVITIES

## SKK 115 SKK 160

### SKK 115

SKK 115 - for vehicle 18 t GVW

Steel tipper body:

- floor made of steel HARDOX HX 450, thickness 4 mm
- boards made of steel S355, thickness 3,0 mm, side thickness 70 mm
- fixed front board, high 2000 mm
- fixed side boards, strength with %jet rips+
- rear board opening «a libro»

Options:

- VHX2000 - strengthened side boards, high 2000 mm, +Z+profiles, steel Weldox 700, thickness 3,2 mm (decreased weight of 250kg)
- N - tipper opening rear board
- ZAS - rear board side opening
- ZAS+N - rear board side opening and tipper opening

SKK 160 - for vehicle 26 t GVW

### SKK 160

Steel tipper body:

- floor made of steel HARDOX HX 450, , thickness 6 mm
- boards made of steel WELDOX 700, thickness 4 mm, side thickness 80mm
- fixed side boards made of +Z+profiles
- rear board opening «a libro»
- fixed front board

Options:

- N - tipper opening rear board
- ZAS - rear board side opening
- ZAS+N - rear board side opening and tipper opening
- HIDR - hydraulic instalation for trailer

SKK 115 for industrial waste



Boards strength with "jet rips+

SKK 160



PSK 180



## REAR BORD OPENING

TIPPER OPENING



DOWN SIDE OPENING



"A LIBRO" OPENING



SIDE OPENING



# PK REAR TIPPERS FOR CONSTRUCTION ACTIVITIES

## SK 160 SK 200 M

## “HALF-PIPE” TIPPERS HP 200 HP 220

SK 160



Boards strength with “jet rips+”

### SK 160

SK 160 - for vehicle 26 t GVW

Steel tipper body:

- rear tipper
- floor made of steel HARDOX HX 450, thickness 6 mm
- boards made of steel WELDOX 700, thickness 4 mm, side thickness 80mm
- fixed side boards, strength with %jet rips+
- rear board tipper opening (lover part only) with automatic mechanical opening / closing system
- fixed front board with cab protection

Options:

- ZZS - extension for the unloading the material 400 mm . (instead of 200 mm)
- HIDR - hydraulic instalation for trailer

SK 200 M



Boards strength with “jet rips”

### SK 200 M

SK 200 M - for vehicle 33 t GVW - MULDEN TIPPER

Steel tipper body:

- rear tipper
- floor made of steel HARDOX HX 450, thickness 8 mm
- boards made of steel WELDOX 700, thickness 5 mm, side thickness 80 mm
- fixed side boards, strength with %jet rips+
- without rear board

HP 220



Tipper opening rear board

### HP 200 HP 220

HP 200 - for vehicle 33 t GVW—“HALF PIPE

HP 220 - for vehicle 32 - 41 t GVW—“HALF PIPE”

Steel tipper body:

- rear tipper - sHALF PIPE+
- floor made of steel HARDOX HX 450, thickness 6 mm (HP 200) or thickness 8 mm (HP 220)
- side boards with "V" profiles, made of steel Weldox 700
- front and rear bords - thickness 5 mm, side boards- thickness 4 mm (HP 200)
- front and rear bords - thickness 6 mm, side boards- thickness 5 mm (HP 220)
- fixed front board with cab protection
- rear board tipper opening (lover part only) with automatic mechanical opening / closing system

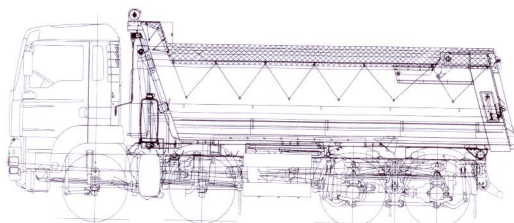
Options:

- H - hydraulic opening rear board - double-acting hydraulic (cylinders for opening and closing; electromagnetic control valve)
- B5/B6 - side boards made of WELDOX 700, for HP 200 - thickness 5 mm (instead of 4 mm) increasing tipper weight for 120 kg for HP 220 - thickness 6 mm (instead of 5 mm) increasing tipper weight for 120 kg
- S6/S8 - side boards made of WELDOX 700, for HP 200 - thickness 6 mm (instead of 5 mm); increasing tipper weight for 60 kg for HP 220 - thickness 8 mm (instead of 6 mm); increasing tipper weight for 60 kg

HP 220



Hydraulic opening rear board



%oil up+tarpaulin

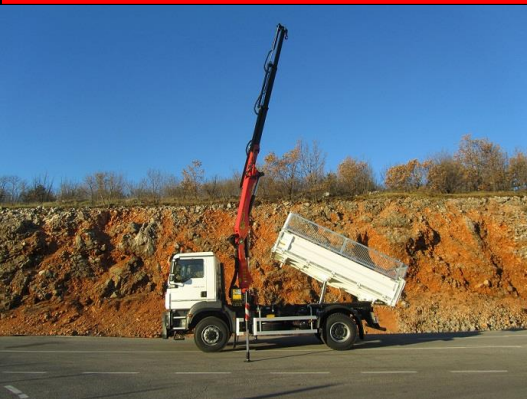
# PK - EXCHANGEABLE BODY SYSTEM

## TIPPER - FIFTH WHEEL COUPLING



## TIPPER - MIXER





**PK d.o.o.**

**Centrala Rijeka / Industrijska zona R-27 / HR- 51223 Škrljevo / Tel. +385 51 503 150 / Fax.+385 51 252 002**

**Poslovni centar Zagreb / Industrijska 5 / HR- 10370 Dugo selo / Tel. +385 1 2754 219 / Fax.+385 2754 606**

**[www.pk-rijeka.hr](http://www.pk-rijeka.hr) / [info@pk-rijeka.hr](mailto:info@pk-rijeka.hr)**